

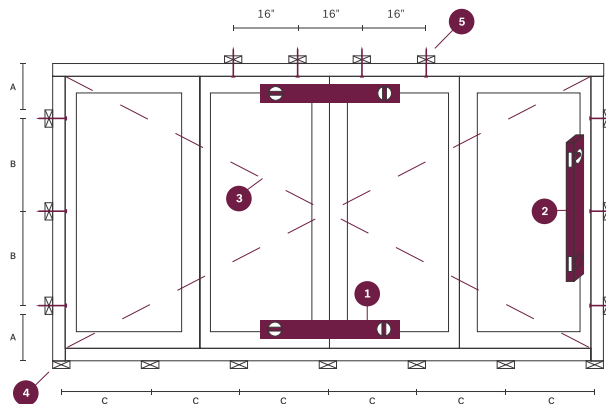
Installation

Source: CAN/CSA-A440.4-07

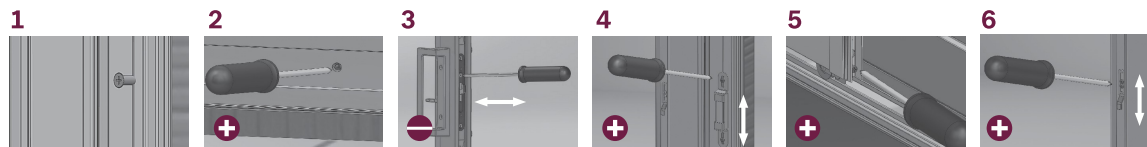
- 1 Level the door**
With a maximum deviation of 1/16-in
- 2 Plumb the door**
With a maximum vertical offset of 1/16-in
- 3 Square the door**
With a maximum difference of 1/16-in
- 4 Install shims**
Space according to the table below. Do not screw into the sill.
- 5 Add screws in the header**
Add screws in the frame header of the opening section at 16 inch intervals

	A (Min.)	B (Max.)	C (Max.)
Wood Frame	50 mm*	800 mm	400 mm
PVC Frame	200 mm*	600 mm	400 mm

* If the exterior finish is dark in colour, add 50mm to the measurement.



Installation and finishing adjustments



1 Installation of anchors
The installation screws must be placed in the interior cavity of the door.

2 Adjusting the rollers of the opening panel
Turn right to raise, turn left to lower. The initial adjustment is to lower the panel completely and then raise it three levels.

3 Mortise hook adjustment
Adjust the hook exit distance using the screw above the hook.

4 Strike plate adjustment
Release the two screws then adjust the height.

5 Screen roller adjustment
Turn right to lift, turn left to lower.

6 Screen strike plate adjustment
Release the two screws then adjust the height.

Recommendations for installation and maintenance

In order to benefit from the performance of this product and the [manufacturer's warranty](#), it is important to pay special attention to the following steps.

Installation

- The shims at the sill must support the sill over the entire thickness to ensure that it is not cantilevered.
- The frame jambs must be level and plumb.
- Leave a gap of at least 1/2-inch around the entire perimeter of the door.
- The sliding door must not carry a load other than its own mass.
- Cavities between the door frame and the opening in the wall must be properly filled

with insulation and the jambs must not bow inward or outward in any way.

- The exterior opening between the door frame and the opening in the wall of the building must be carefully caulked.
- Do not alter the product in any way.
- Protect the sliding door from dirt and excessive moisture during construction.
- Never anchor the door by screwing into the interior frame extensions.

Maintenance

- Clean and lubricate movable hardware at regular intervals with a silicone or lithium-based spray lubricant.
- Provide adequate ventilation in front of the sliding door and maintain the relative humidity at an acceptable level to avoid condensation.
- Clean the door with a mild, non-corrosive cleaner.